

# Handmade Tiles

by Keramos Tile & Stone

---



Keramos Handmade tiles are produced manually by artisans. The clay mixture for the biscuit is made using a hand press to mold the biscuit into shape. The artisan then uses a pottery kiln to fire the biscuit. The biscuit is then glazed by hand to give it its characteristic handmade look. Using unique molds and dyes we can achieve a plethora of shapes and colors.



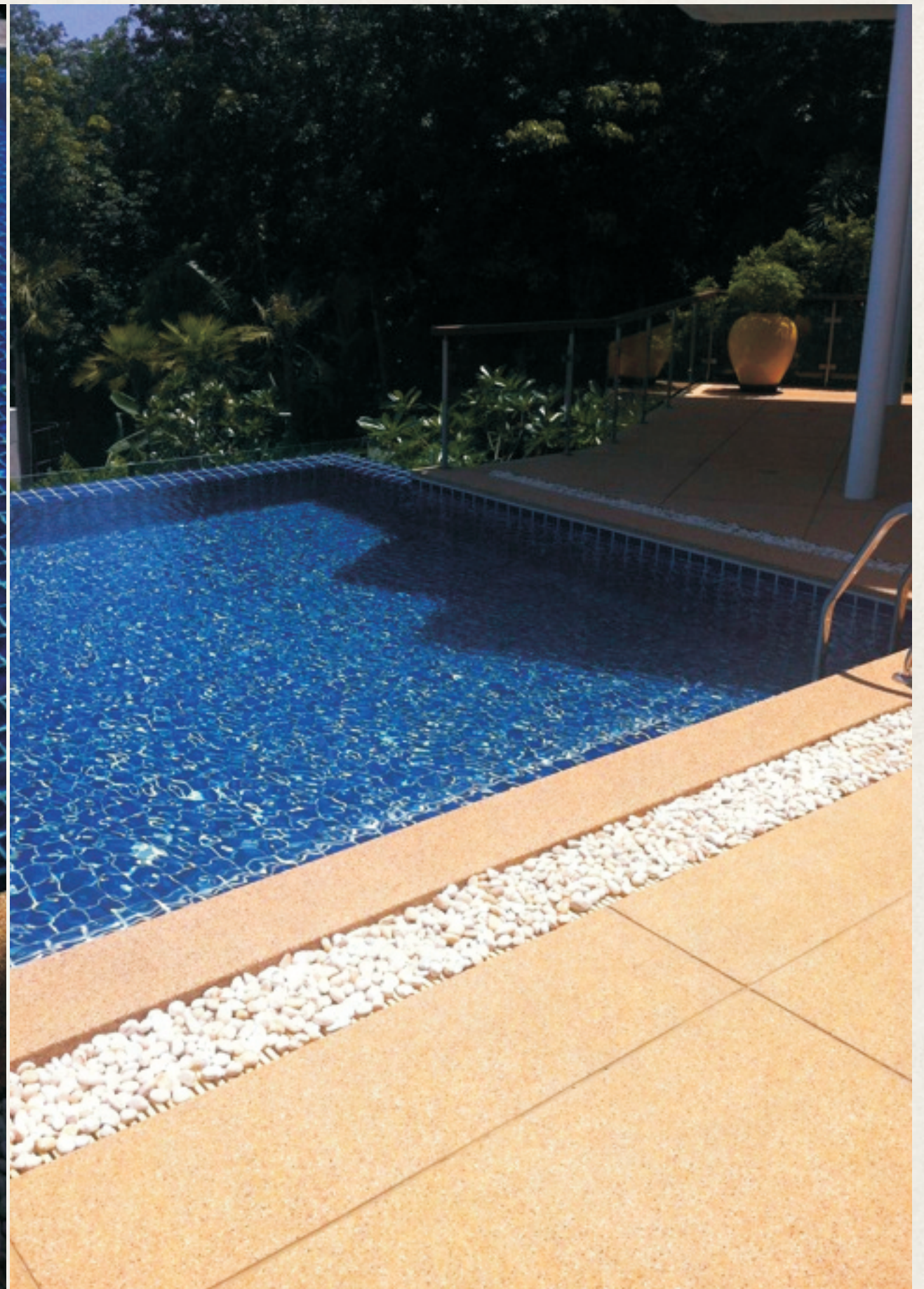


# The Popular Square

Appealing for swimming pools, water bodies & bathrooms

---

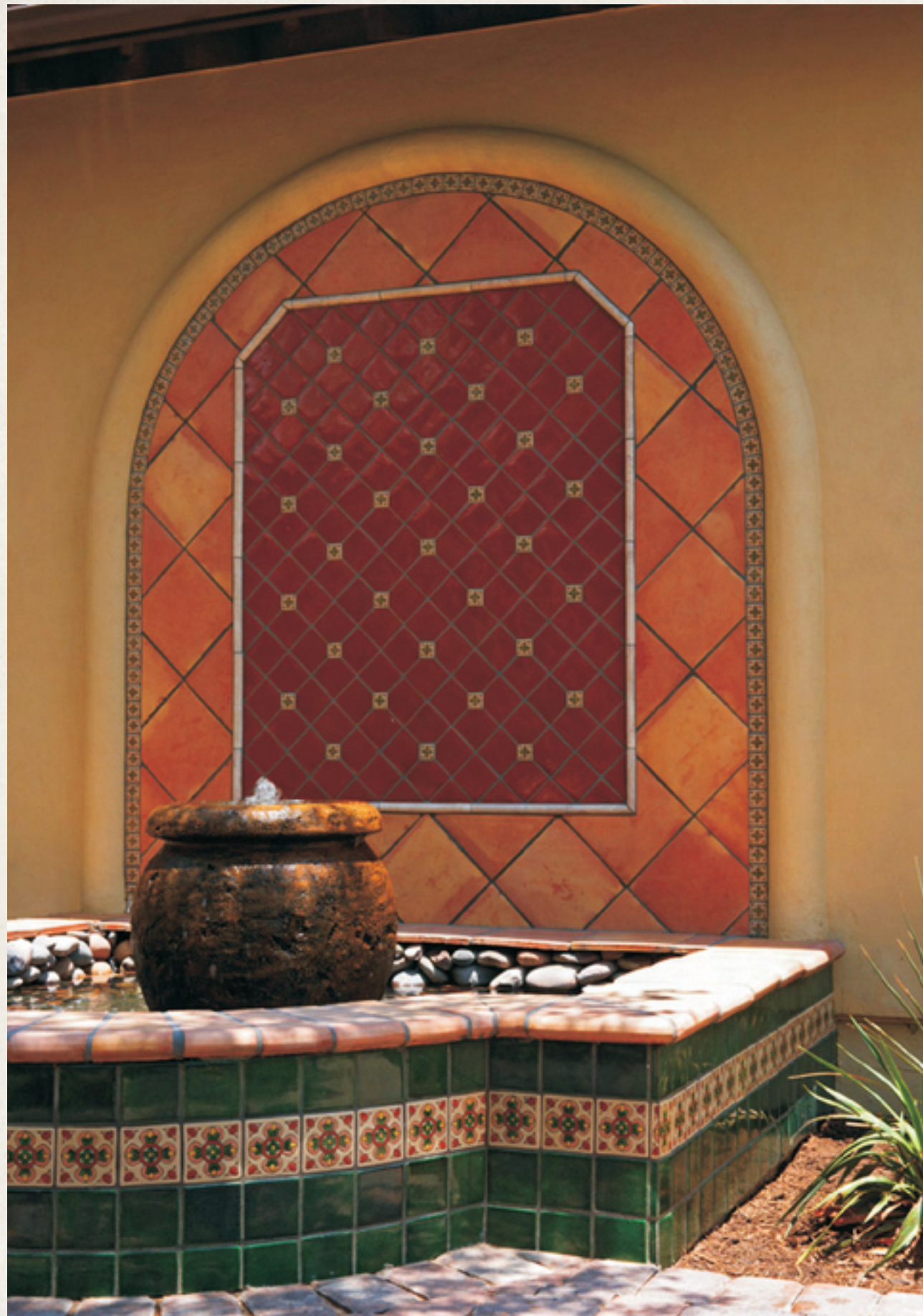
















# The Chic Subway tile

Initially used in New York's Metro, and in post-modern structures in New York thereafter

---













# The Beveled Subway tile

The authentic 1890's parisian metro tiles.

---











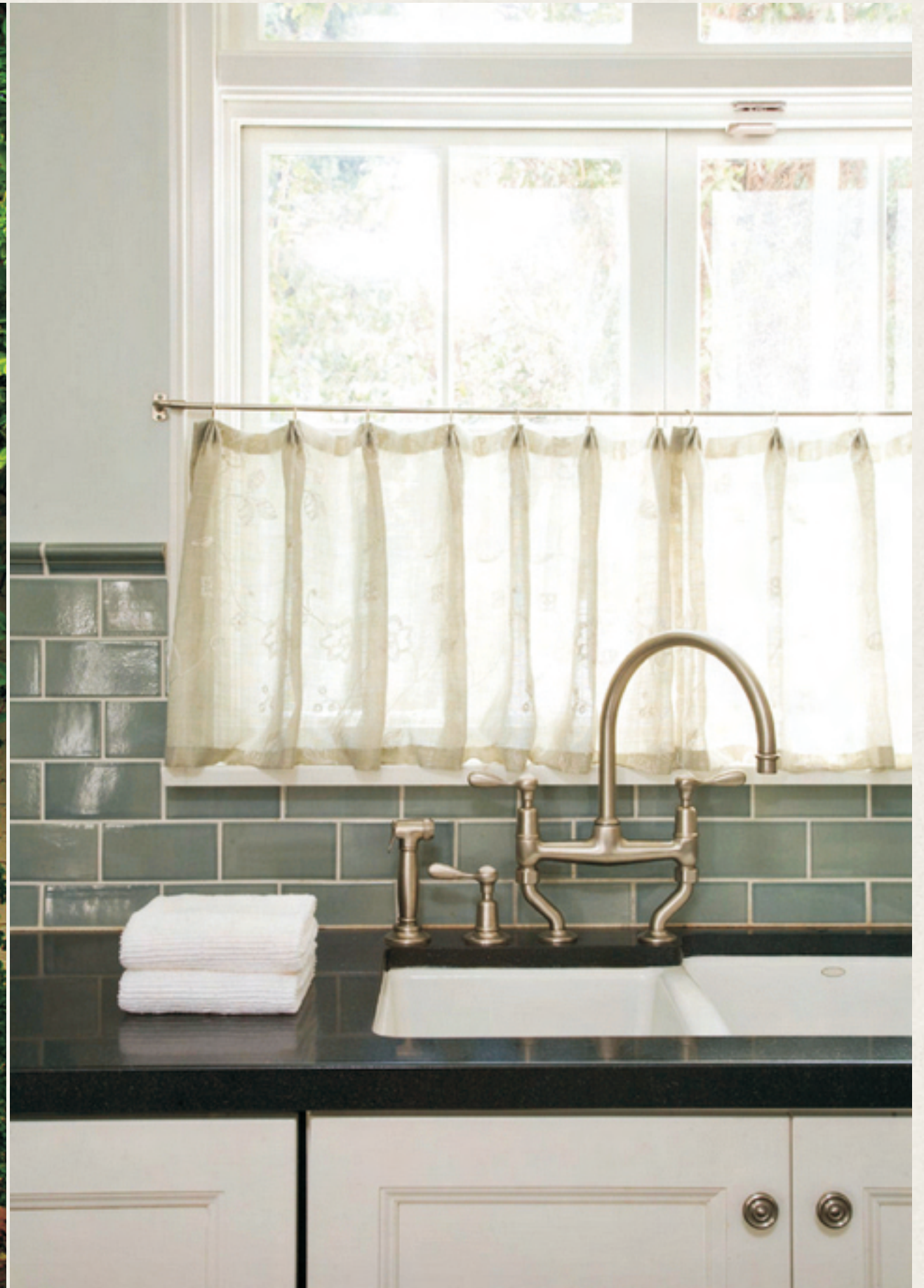


# Stunning Colors

A Keramos tradition

---













# Beautiful Shapes

The possibilities are limitless

---







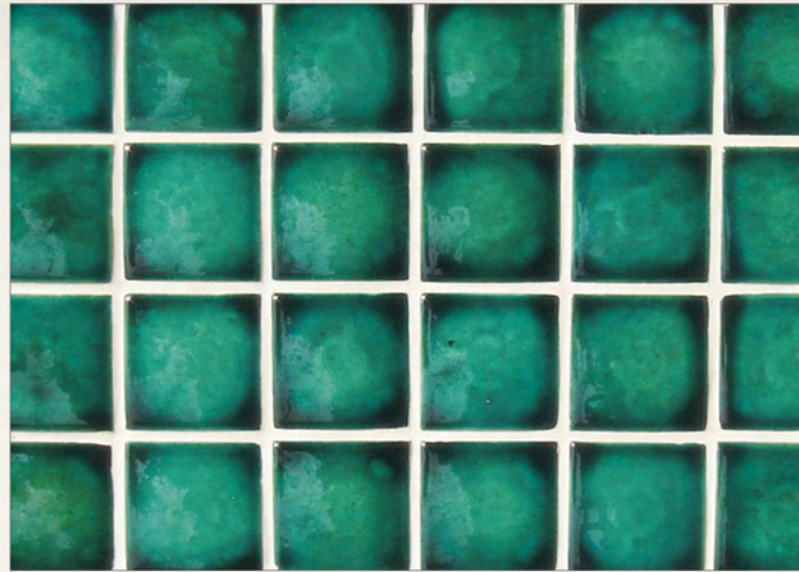




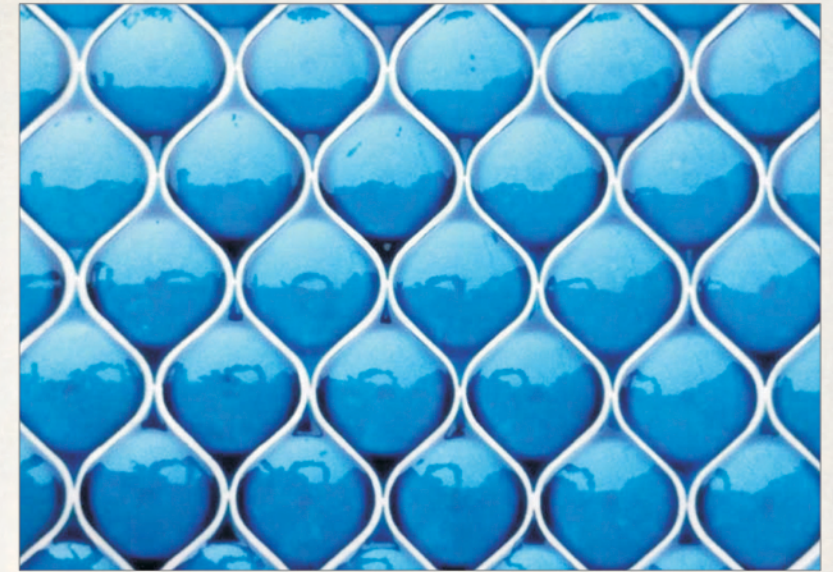
# Azul Designs



SUBWAY Plain Cobalt Blue



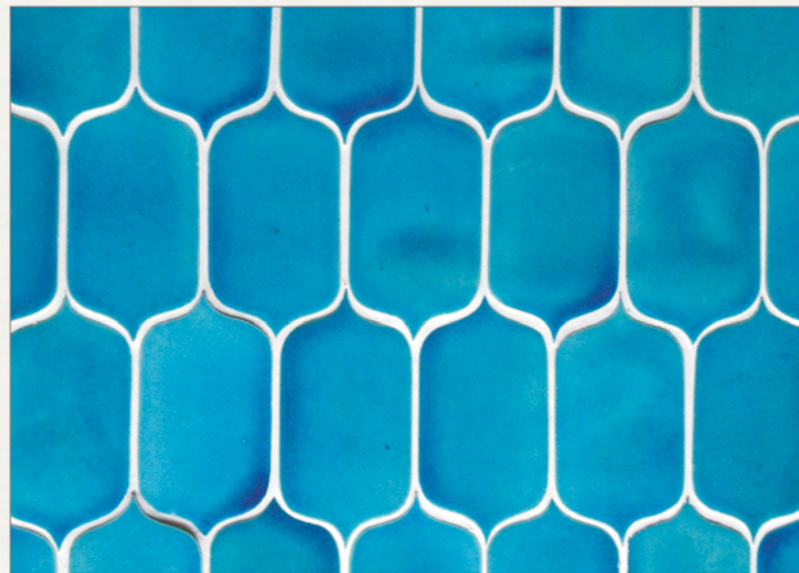
SQUARE Oval Aqua



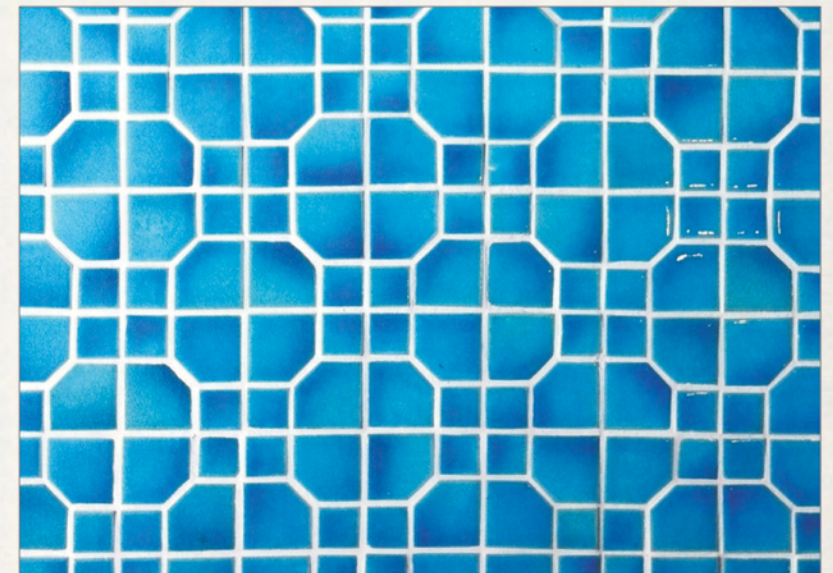
TEARDROP Oval Egyptian Blue



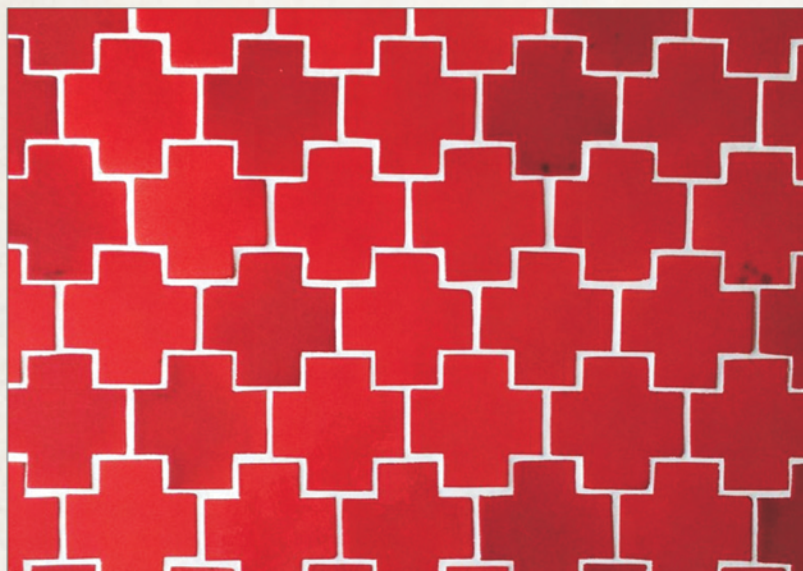
OGEE Big & Small White & Small Ivory



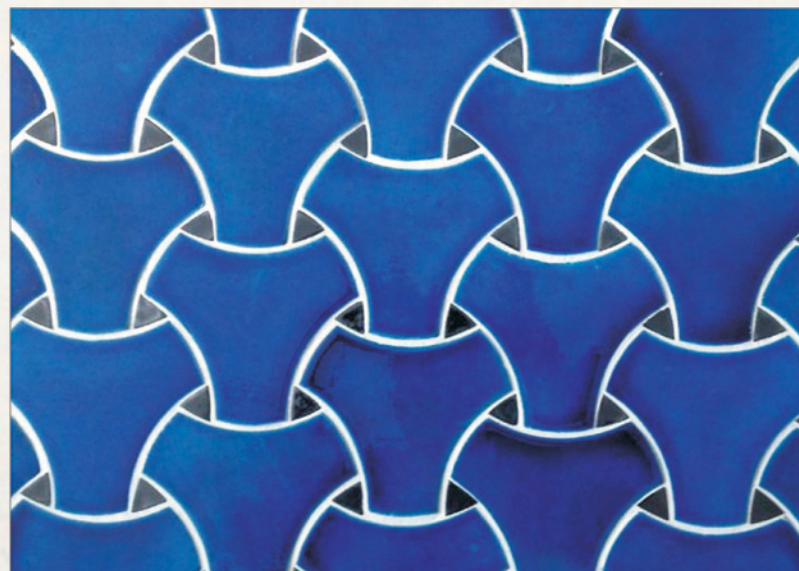
NAVONA Egyptian Blue



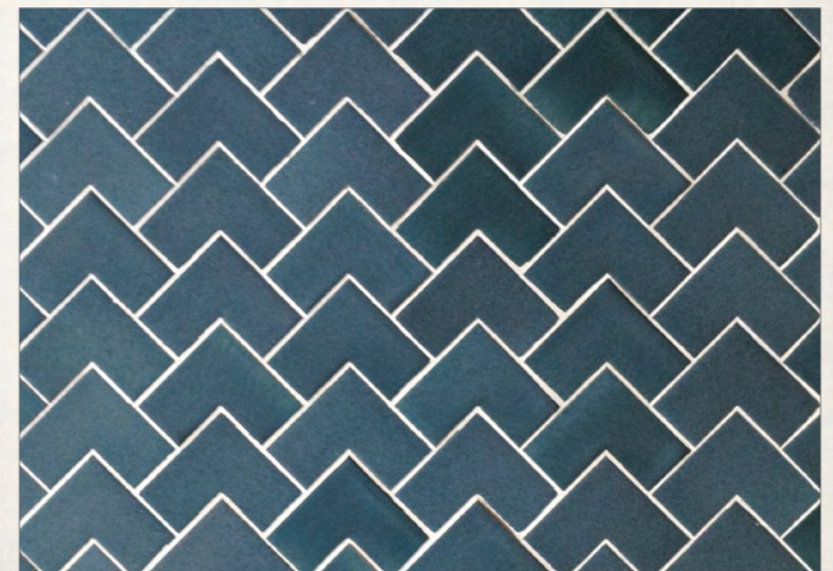
NANTES Egyptian Blue



MOROCCAN CROSS Pepsi Red



LIPARI Moroccan Blue With Black Inserts



L SHAPE Grey

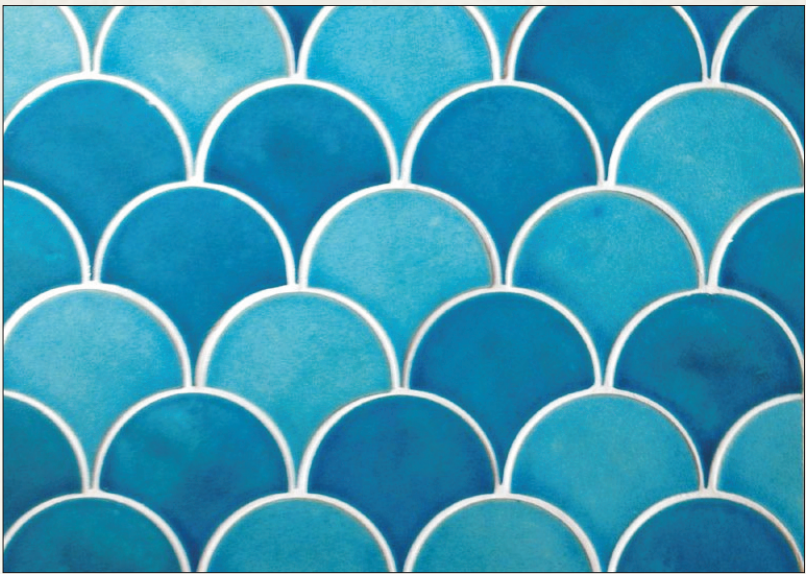




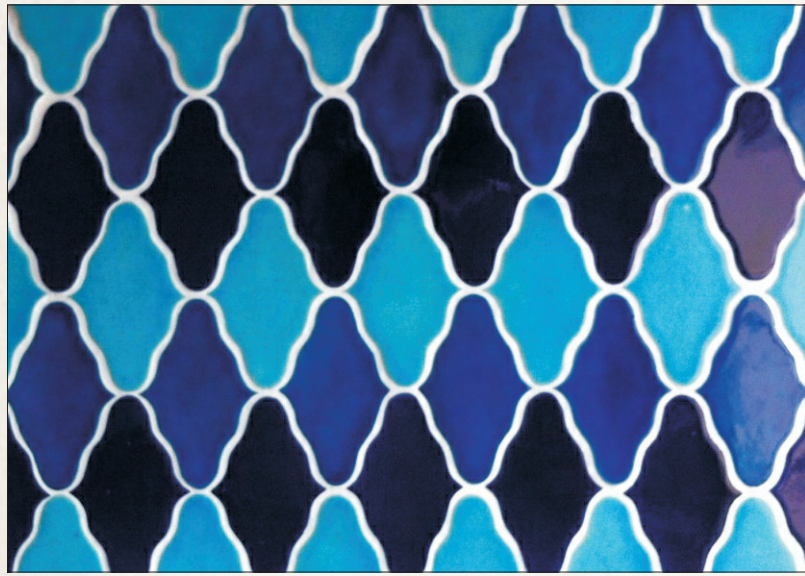
HOUSTOOTH Black & White



HONEYCOMB Egyptian Blue Cobalt Blue



FISHSCALE Egyptian Blue Light & Dark



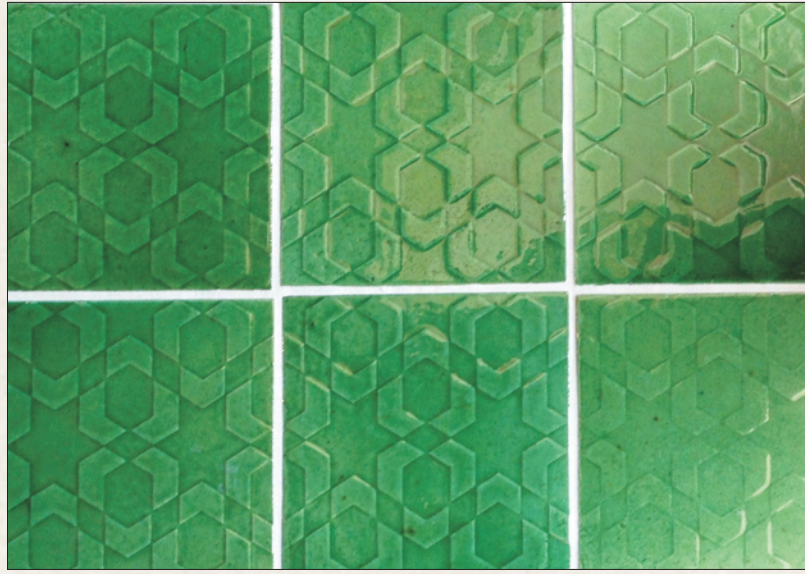
DELINA Moroccan Blue, Cobalt Blue, Egyptian Blue



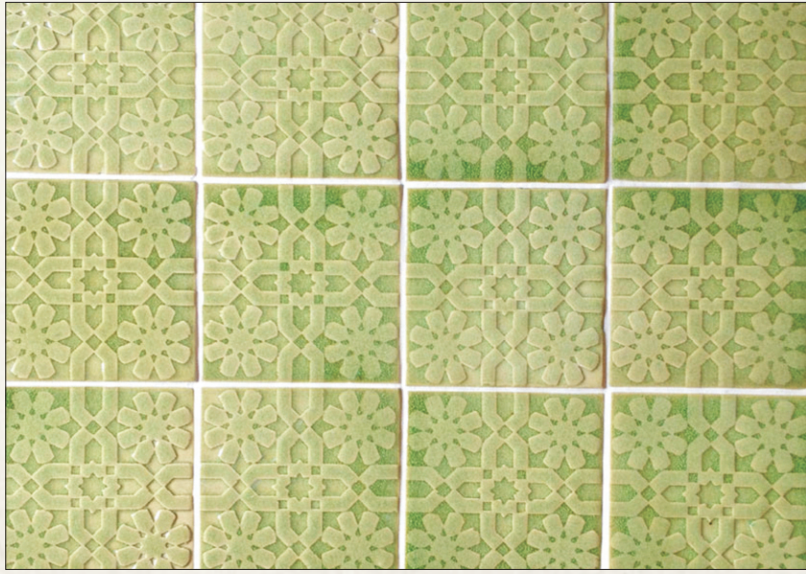
SUBWAY BEVELLED Celadon Green



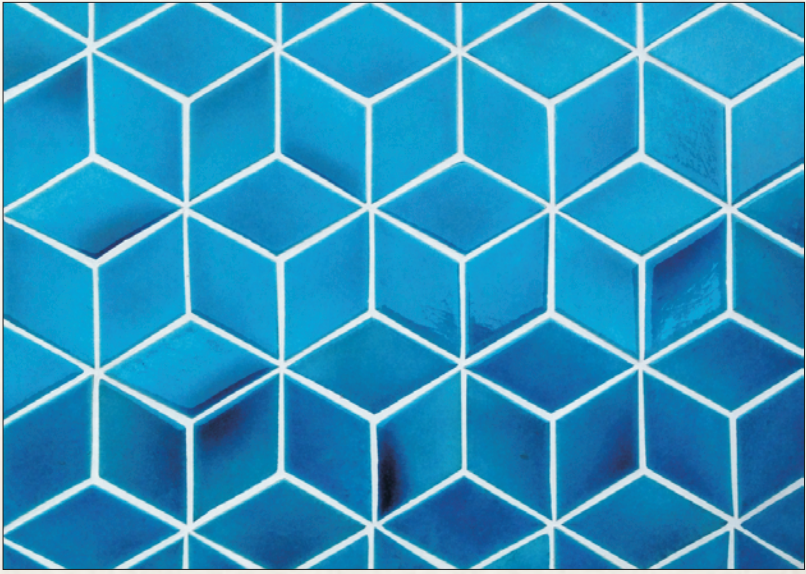
BILBAO Lime Green



BATUR Dark Aqua

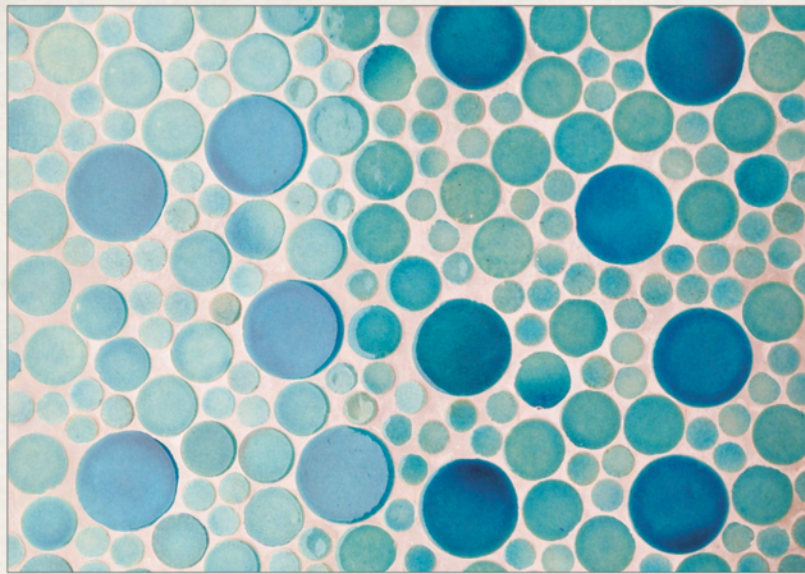


BAKU Lime Green

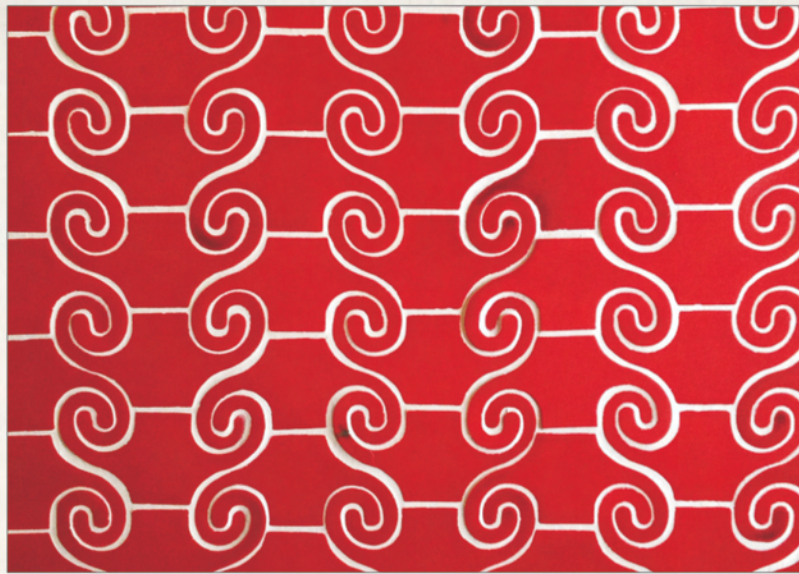


MESSINA Egyptian Blue

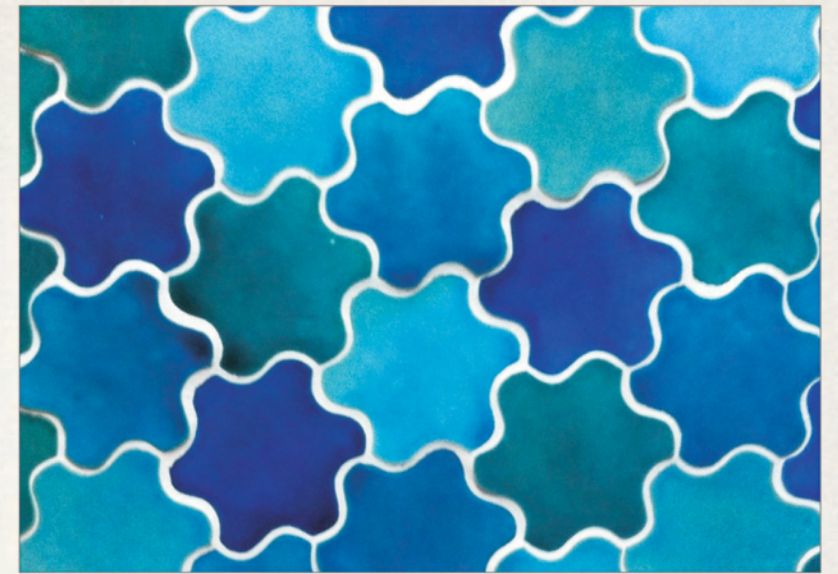




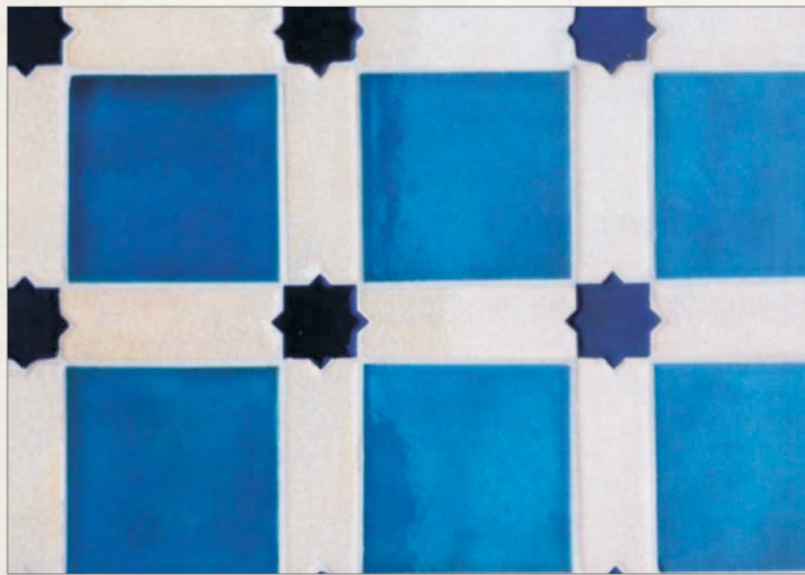
DELPHI PEBBLES Egyptian Blue Light & Dark



ANCORA Pepsi Red



TIBER-Moroccan Blue, Egyptian Blue Light & Dark, Spanish Green



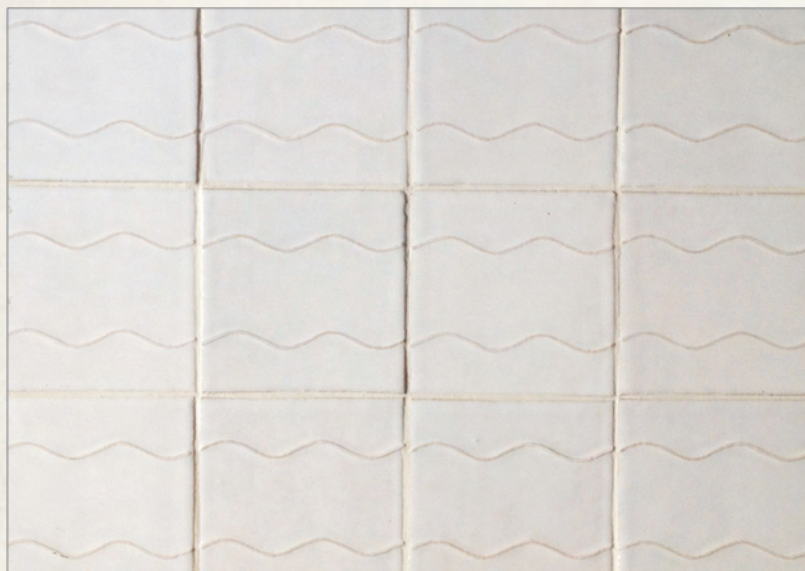
LUXAR Egyptian Blue



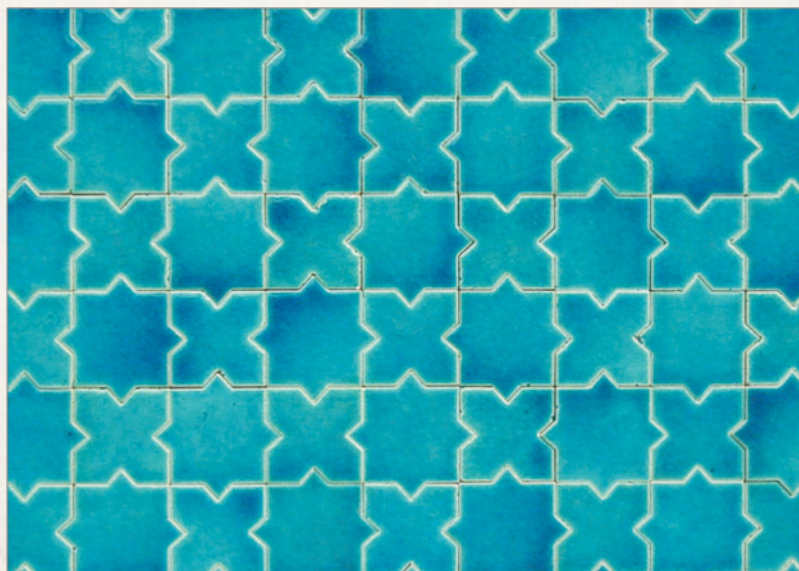
CLOVER Design Ivory & White



LONG OGEE White With Black Dote



WAVE White Wave



TABRIZ Moroccan Blue with Ridge



ROOF TILE Morroccan Blue



SPECIFICATION	DESCRIPTION
SIZES	10cmX10cm, 7.5cmX7.5cm, 7.5cm X15cm
SHAPES	SQUARE, RECTANGLE, OGEE, TABRIZ, FISH SCALE, HEXAGON
BEVELLED	SQUARE, RECTANGULAR
GLAZE COLORS	COBALT, AQUAMARINE, GREEN, WHITE, CREAM, BLACK, RED, YELLOW ( FIRED AT 1100oC)
THICKNESS	1 CM APPROX
SIZE VARIATION	+/- 2% MAXIMUM
BODY	WHITE CLAY, (FIRED AT 1100C)
POROSITY	15% APPROX
USAGE	FOR WALLS ONLY
PROJECT PRICE	ON REQUEST WITH QUANTITY



## Contact Information

# Keramos Tile & Stone Pvt. Ltd.

F-580, Lado Sarai, New Delhi-110030, India

Next to Crescent Mall / CNG Pump

Tel. No. 011-46031765, 41665102

Email : delhi@keramosindia.com

keramos@keramosindia.com

marketing@keramosindia.com

Contact : Ravindran : 09810385112

R. Anand : 09818663525

Nitesh : 09810280063